

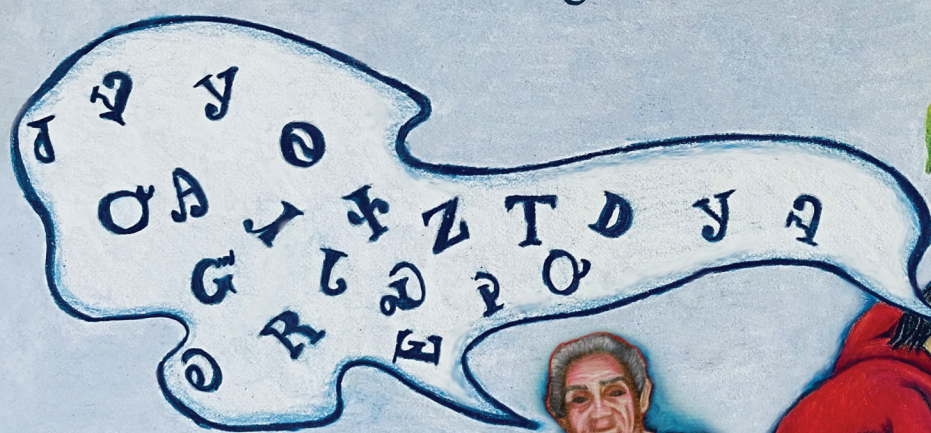
110TH CHEROKEE INDIAN FAIR

EXHIBIT BOOK

October 4–8, 2022

*Say it
in Cherokee*

Hniwi tsalagi



Say it in Cherokee

Sgi! ᵒᵒᵓ
Thank You

We greatly appreciate the following who assisted with the development of this book:
EBCI Communications Department, EBCI/NC Cooperative Extension Center,
Qualla Arts & Crafts Mutual, Inc., Element Advertising Agency,
the Museum of the Cherokee Indian, Kituwah Speakers Council

2022 Fair Theme Winner, Jeannie Burgess

“Hniwi Tsalagi – Say It In Cherokee “®

“Every chance you get, speak Cherokee, no matter how much or how little you know.
Come up with resources to learn phrases and words in our everyday lives.”

Cover design taken from a painting by Preston Bark titled “Wolftown”



Siyo nigad,

It is an honor to be writing to you as the 2022 Cherokee Indian Fair week approaches. The fair is a much-anticipated event that I know we all look forward to year after year. After postponing the Cherokee Indian Fair for 2 years due to the pandemic, and the uncertainty of when we would be able to hold the fair again, I foresee this year being one to remember. I know that there are mixed feelings about the location change, and I understand and appreciate the concerns. The priority first and foremost is the safety of all Cherokee citizens and those attending.

I assure you that extensive planning and research was done before making the final decision to hold the fair at the Cherokee Convention Center. It is my hope that we all keep an open mind regarding the location and maintain a spirit of gratitude given that we are able to once again hold our beloved fair after 2 long years.

I look forward to seeing each one of you at this year's fair to celebrate our culture, heritage, and traditions.



Prayers and blessings over this year's festivities.

Sincerely,

Principal Chief Richard Sneed
Eastern Band of Cherokee Indians



Siyo nigada,

Greetings from the team in the Public Health and Human Services Division. After two years of coping with the COVID-19 pandemic, we join you in rejoicing that we can be together again and celebrate the Cherokee community.

While you enjoy the fun and fellowship of the Fair, we want you to stay healthy and safe by observing the following:

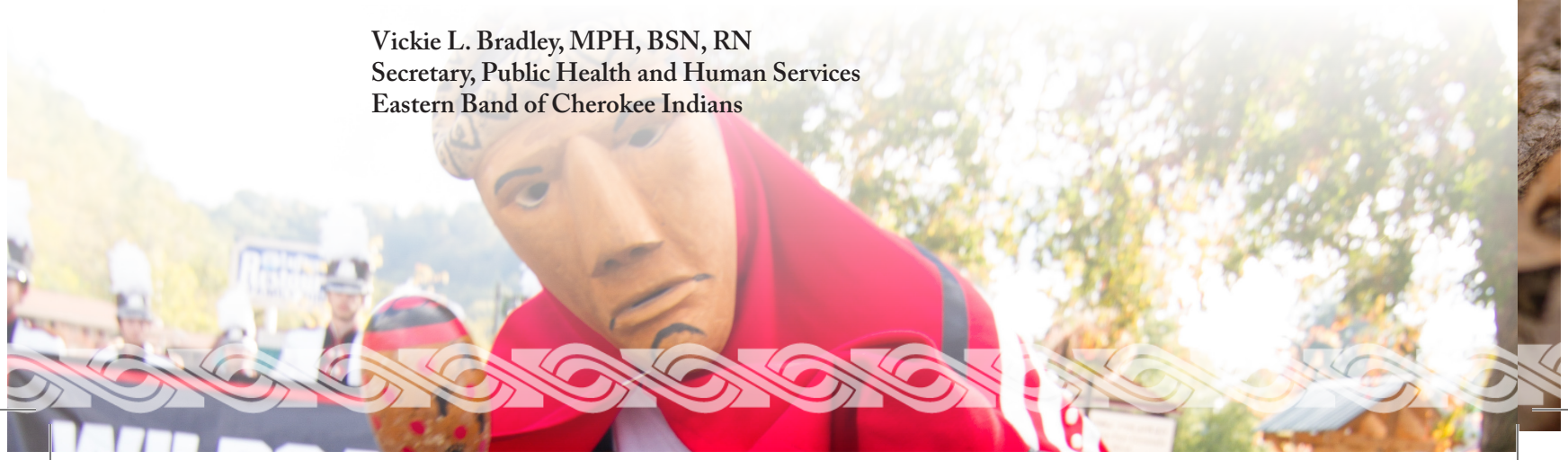
- If you are sick, stay home from the Fair. If you have been exposed to COVID-19 or another contagious illness, consider staying home to protect the health and welfare of others.
- Get vaccinated against COVID-19. Vaccine is now plentiful and available FREE to all community members. We strongly encourage you to take the vaccine so that you can protect yourself and others from COVID-19.
- Get vaccinated against the flu. Flu is a very serious condition, and we encourage everyone to take the annual flu vaccine.
- Wash your hands and cover your cough. This simple act is still the best way to keep from spreading illness.
- Stay informed. Pay attention to Public Health and Human Services announcements for news and information on community health issues, weather, and other unpredictable events. Be prepared!



By following these simple suggestions, you can protect yourself, your family, and your community! Enjoy the fair!

In good health,

Vickie L. Bradley, MPH, BSN, RN
Secretary, Public Health and Human Services
Eastern Band of Cherokee Indians





Qualla Arts

AND CRAFTS MUTUAL, INC.

EXHIBIT LISTINGS



645 Tsali Blvd. | PO Box 310 | Cherokee, NC 28719
QuallaArtsAndCrafts.com | 828.497.3103



*Let's Support Local Artisans and
Keep Cherokee Beautiful. Together.*



Qualla Arts
AND CRAFTS MUTUAL, INC.

A Mission to Preserve and Protect.

The mission of Qualla Arts and Crafts Mutual, Inc. is to encourage the development, production, and marketing of authentic Indian arts and crafts produced on this Reservation, and to provide supplemental income for the Indian craftspeople and their families.

More Than Seventy Years of Handcrafted History.

Founded in 1946 by the Eastern Band of Cherokee Indians' artisans and craftspeople, Qualla Arts and Crafts Mutual, Inc. is the oldest Native American cooperative in the United States.

Its beginnings dovetailed with the opening of Great Smoky Mountains National Park in 1940, which ushered in a boom of postwar growth of highways, family travels, and cultural tourism to the Qualla Boundary. At the same time, the arts and crafts made by Cherokee people increased in quality and quantity—and the simple laws of supply and demand also evidenced a growing need for a location to sell crafts year-round.



That need was met in the summer of 1946, when about sixty Cherokee craftspeople, with the help of Indian Service personnel, formed the Qualla cooperative known as the Cherokee Indian Craft Co-op. In 1949, the “co-op,” as it was known locally, was juried into the Southern Highlands Handicraft Guild. The co-op received its current name, Qualla Arts and Crafts Mutual, Inc., in the mid-1950s, but serves its original purpose—to “provide a year-round market for Cherokee handicrafts, to promote high standards of workmanship and design, to help craftspeople solve their problems, and to secure better prices for their craftwork.”

More Than Seventy Years.

After being housed in several locations, including the Cherokee Indian Agency building, the cooperative rented shop space from the Tribe in the Boundary Tree Motel complex. By 1960, sales at the shop had been so successful that the Executive Committee began making plans to erect the cooperative's own shop building. The success of the new building allowed for the addition of a gallery in 1969. Less than twenty years later, Qualla Arts and Crafts Mutual, Inc. had outgrown its space. As a result, in 1976, the building underwent remodeling. This project doubled the sales area, added additional storage space, and expanded the gallery. A section to market crafts and artwork from other indigenous tribes was also established at this time.

Even though the eligibility requirements for Qualla Arts and Crafts Mutual, Inc. membership and crafts are stricter, the number of members has increased to over 350 since the cooperative's founding in 1946. Qualla Arts and Crafts Mutual, Inc. remains one of the most successful Native American cooperatives in the country. Recently awarded funds from the Cherokee Preservation Foundation help to ensure continued growth and improvements.



Stewards of the Earth.

As a result of the growth and development of cities and towns, natural materials for our artists and craftspeople have become scarce. Qualla Arts and Crafts Mutual, Inc. is dedicated to protecting and preserving the resources our artists use to make their crafts. We are actively partnering with groups and organizations that are committed to the same or similar causes.

Two such organizations are Mainspring Conservation Trust (MCT) and the Revitalization of Traditional Cherokee Artisan Resources (RTCAR). MCT conserves the waters, forests, farms, and heritage of the upper Little Tennessee and Hiwassee River valleys. This includes all of North Carolina west of the Balsam Mountains and a portion of North Georgia. MCT has created programs to promote sound forest management on private lands, as well as habitat restoration along miles of river and stream frontage. Their hard work aids the restoration of traditional Cherokee artisan resources, such as river cane, butternut, and white oak. A memorandum of understanding with Qualla Arts and Crafts Mutual, Inc. has facilitated regular river cane harvest on MCT properties.

Similarly, the RTCAR initiative is a multiyear grant-making program whose purpose is to assist the Eastern Band of Cherokee Indians in restoring the traditional Cherokee balance between maintaining and using natural resources. Funded by the Cherokee Preservation Foundation through a grant to the Cherokee Studies Department at Western Carolina University, the RTCAR initiative has been undertaken to teach, protect, and promote Cherokee traditional art, resources, and land care for present and future generations. For more information about the cooperative's efforts with our partners, please visit QuallaArtsAndCrafts.com.

Join Us Today. Become a Member.

Qualla Arts and Crafts Mutual, Inc. membership requirements are simple:

- Must be 16 years of age or older
- Must be an enrolled member of the Eastern Band of Cherokee Indians

Interested artists and craftspeople must submit a membership application and three samples of their artwork to be judged by the current board. Applications are available at Qualla Arts and Crafts Mutual, Inc. during regular business hours. Membership application judging is done biannually in late January and mid-June, after which applicants are scheduled by appointment to demonstrate their skills in front of the current board.

The artwork is judged on a scale from 1–5; 1 being Not Acceptable and 5 being Excellent. There are ten categories that the board members judge. They are: authenticity, quality, craftsmanship exhibited, technique used, finish, knowledge of craft process, difficulty, marketability, and amount of family history and legacy involved in the artwork. A total of 50 points means the artist is accepted. A score of 35 points means that the artisan's membership has to be discussed by the standards committee, and a score of less than 35 means the artisan is not accepted as a member.



Once an artisan's application and demonstrations are complete, presuming they meet all other requirements listed above, the application must then be approved by at least 35 of the 350+ Qualla Arts and Crafts Mutual, Inc. members at meetings held in February and July. The Qualla Arts and Crafts Mutual, Inc. board of directors and the current members have high expectations of potential members. Only the highest quality of work produced by the best and most skillful artisans can be represented through Qualla Arts and Crafts Mutual, Inc.

Visit QuallaArtsAndCrafts.com.

Our site offers a variety of artists, information about them and their particular skills, and a gallery displaying a number of items we have available for purchase in our physical store on the Qualla Boundary in Cherokee.



Qualla Arts
AND CRAFTS MUTUAL, INC.

645 Tsali Blvd. | PO Box 310 | Cherokee, NC 28719
QuallaArtsAndCrafts.com | 828.497.3103



Cherokee Indian Fair Arts and Crafts Awards 2022

Qualla Arts and Crafts Mutual, Inc.

828.497.3103



Entry Requirements:

- 1) You must present a correct mailing address, and an enrollment card verifying you are an enrolled member of the Eastern Band of Cherokee Indians.
- 2) You must have made what you are exhibiting and it must have been made between October 1, 2020 – September 30, 2022.
- 3) Fair officials reserve the right to reject any entry.
- 4) Items are entered “at your own risk.” Neither the Fair nor Qualla Arts and Crafts Mutual, Inc. will assume any responsibility for the safety or condition of your returned exhibited items.
- 5) You will be required to sign a W-9 tax form at the time of entry. For this reason, we will also need your social security number. When entering an item for a minor, use his or her LEGAL name and THAT PERSON’S social security number.
- 6) Prize winners will receive a check in the mail.

Entries will be taken on: Friday, September 30, 2022 from 8:00 a.m. until 7:00 p.m. You may pick up your entries on: Sunday, October 9, 2022 from 1:00 p.m. until 4:00 p.m. and Monday, October 10, 2022 from 8:00 a.m. until 4:00 p.m.

Adult Division:

Ages 18 and up

POTTERY:

Best Traditional Cherokee Unglazed

Pottery, 3 pieces:

\$125, \$100, \$75

Best Modern Pottery, 3 Pieces:

\$125, \$100, \$75

Best Old-Style Cherokee Pottery, 3 pieces:

\$125, \$100, \$75

Best Miniature Pottery, 4” or less, 3 pieces:

\$100, \$75, \$50

CARVINGS:

Best 2 pieces of Large Wood Carvings:

\$125, \$100, \$75

Best Display of 5 Small Wood Carvings:

\$125, \$100, \$75

Best 3 Pieces of Stone Carvings:

\$125, \$100, \$75

Best Display of 3 Masks:

\$125, \$100, \$75

Best Hand-Carved Bowl:

\$125, \$100, \$75

Best Display of 2 Wooden Utensils:

\$100, \$75, \$50

Best Blowgun w/6 Darts:

\$100, \$75, \$50

Best Bow & Arrow w/2 Arrows:

\$100, \$75, \$50

Best Pair of Ball Sticks:

\$100, \$75, \$50

Best Mounted Arrowhead Collection:

\$100, \$75, \$50

Best Wood Burning, 3 pieces:

\$100, \$75, \$50

Best Wood Turning, 3 pieces:

\$100, \$75, \$50

Best Display of Carved Basket Handles (3):

\$100, \$75, \$50

WEAPONRY:

Best Display of 3 Weapons: (spear, tomahawk, war club, etc.):

\$125, \$100, \$75

NATIVE INSTRUMENTS:

Best 3 Dance Rattles:

\$100, \$75, \$50

Best 3 Indian Flutes:

\$100, \$75, \$50

Best 2 Drums (ceremonial, hand, water, etc.):

\$125, \$100, \$75

SHELLS:

Best Display of 3 Shell Items:

\$125, \$100, \$75

GOURDS:

Best Display of 3 Gourds:

\$125, \$100, \$75

COPPER:

Best Display of 3 Copper Items:

\$125, \$100, \$75

BASKETS:

Best Display of 3 Double-Woven River Cane Baskets:

\$250, \$200, \$150

Best Display of 3 Double-Woven White Oak Baskets:

\$200, \$150, \$100

Best Display of 3 Double-Woven Maple Baskets:

\$200, \$150, \$100

Best Display of 3 Single-Woven River Cane Baskets:

\$200, \$150, \$100

Best Display of 5 White Oak Baskets:

\$200, \$150, \$100

Best Display of 5 Maple Baskets:

\$200, \$150, \$100

Best Display of 5 Honeysuckle Baskets:

\$200, \$150, \$100

Best Display of 5 Ribbed Baskets:

\$200, \$150, \$100

Best Display of 5 Pine Needle Baskets:

\$200, \$150, \$100

Best Set of 5 Trays:

\$200, \$150, \$100

Best Display of Wall Mats (3):

\$200, \$150, \$100

MINIATURE BASKETS:

All mini baskets should be no larger than 4".

Best Display of 3 Miniature Double-Woven River Cane Baskets:

\$100, \$75, \$50

Best Display of 3 Miniature Double-Woven White Oak Baskets:

\$100, \$75, \$50

Best Display of 3 Miniature Double-Woven Maple Baskets:

\$100, \$75, \$50

Best Display of 3 Miniature River Cane Baskets:

\$100, \$75, \$50

Best Display of 3 Miniature White Oak Baskets:

\$100, \$75, \$50

Best Display of 3 Miniature Maple Baskets:

\$100, \$75, \$50

Best Display of 3 Miniature Honeysuckle Vine Baskets:

\$100, \$75, \$50

Best Display of 3 Miniature Ribbed Baskets:

\$100, \$75, \$50

Best Display of Basket Dyes:

\$75, \$50, \$25

*All beadwork, paintings, and drawings must be mounted.

*If your craft is fragile it is up to you, the artist, to submit it in a protective display case.

*Neither the Co-op nor the Cherokee Fair staff will be responsible for any items that are broken or damaged during this event.

*The arts and crafts entered must have been created since October 1, 2020.



DOLLS: PAIRS

Best Pair of Cloth Indian Dolls:

\$125, \$100, \$75

Best Pair of Soft Sculptured Dolls:

\$125, \$100, \$75

Best Pair of Cornhusk Dolls:

\$125, \$100, \$75

Best Pair of Wooden Dolls:

\$125, \$100, \$75

FINGER WEAVING:

Best 3 Pieces of Finger Weaving:

\$125, \$100, \$75

BEADWORK:

All beadwork must be mounted.

Groups are not to be mixed.

Best 3 items using Pony Beads:

\$125, \$100, \$75

Best 3 items using Seed Beads:

\$125, \$100, \$75

Best 3 items using Hex Beads:

\$125, \$100, \$75

Best 3 items using Cut Beads:

\$125, \$100, \$75

PAINTINGS:

All paintings must contain Native American subject matter. They must also be mounted and ready to hang.

Best 18" Paintings:

\$125, \$100, \$75

DRAWINGS:

All drawings must contain Native American subject matter. They must also be mounted and ready to hang. Due to a limited amount of space, we will only accept one entry for each category in the Drawings category.

Best Pen and Ink Drawing:

\$125, \$100, \$75

Best Pencil/Pastel Drawing:

\$125, \$100, \$75

PHOTOGRAPHY:

All photography must be framed and ready to hang. Must include a description attached to the back indicating what it is, and what technique was used to achieve the results. Photographs that are damaged, have watermarks, or are unclear will not be accepted. Photos must have been taken between October 1, 2020 – September 30, 2022.

Professional:

Any person connected with photography as a business owner, instructor, etc., or anyone producing photography for personal monetary gain from his or her hobby.

Professional / Nature:

\$125, \$100, \$75

Professional / Cherokee Dances:

\$125, \$100, \$75

Professional / Cherokee Faces:

\$125, \$100, \$75

Professional / Other Photographs:

\$125, \$100, \$75 (Photo that does not fit a listed category)

Professional / Storytelling:

\$125, \$100, \$75 (Series of 3 photos size 8x10 that tell a story)

Professional / Reflecting Fair Theme:

\$125, \$100, \$75

Professional / Historical – Photo of Choice:

\$125, \$100, \$75

Open Division:

All entries in the Open Division must contain 3 items. We will not accept anything for the Open Division that fits into one of the categories listed above.

Open Division:

\$100, \$75, \$50

MEMORY KEEPERS:

A 300- to 500-word history of anything pertaining to Cherokee history and culture. The written portion may be accompanied by 3 to 5 photographs, 8.5"x11" framed.

Memory Keepers:

\$125, \$100, \$75

BEST OF SHOW:

The winners for this category are chosen after judging is complete. Winners are chosen only from entries that have placed 1st in the categories listed above.

Best of Show:

\$425, \$375, \$350

Young Adult Division:

Ages 13-17

Wood Carvings, 2 pieces:

\$75, \$50, \$25

Stone Carvings, 2 pieces:

\$75, \$50, \$25

Indian Ball Sticks pair:

\$75, \$50, \$25

Weaponry, 2 pieces:

\$75, \$50, \$25

River Cane Baskets (2):

\$75, \$50, \$25

Maple Baskets (2):

\$75, \$50, \$25

White Oak Baskets (2):

\$75, \$50, \$25

Honeysuckle Vine Baskets (2):

\$75, \$50, \$25

Pony Beads, 2 items:

\$75, \$50, \$25

Seed Beads, 2 items:

\$75, \$50, \$25

Hex Beads, 2 items:

\$75, \$50, \$25

Cut Beads, 2 items:

\$75, \$50, \$25

Old-Style Pottery, 2 items:

\$75, \$50, \$25

Pottery, 2 items:

\$75, \$50, \$25

Finger Weaving, 2 items:

\$75, \$50, \$25

Dolls, a pair:

\$75, \$50, \$25

Drawing/Pastel:

\$75, \$50, \$25

Paintings:

\$75, \$50, \$25

Young Adult Open Division:

All entries in the Open Division must contain 2 items. We will not accept anything for the Open Division that fits into one of the categories listed above.

Open Division:

\$75, \$50, \$25

MEMORY KEEPERS:

A 300- to 500-word history of anything pertaining to Cherokee history and culture. The written portion may be accompanied by 3 to 5 photographs, 8.5"x11" framed.

Memory Keepers:

\$75, \$50, \$25

BEST OF SHOW:

The winners for this category are chosen after judging is complete. Winners are chosen only from entries that have placed 1st in the categories listed above.

Best of Show Young Adult:

\$125, \$100, \$75

*All beadwork, paintings, and drawings must be mounted.

*If your craft is fragile it is up to you, the artist, to submit it in a protective display case.

*Neither the Co-op nor the Cherokee Fair staff will be responsible for any items that are broken or damaged during this event.

*The arts and crafts entered must have been made since October 1, 2020.



Youth Division:

Ages 5-12

Wood Carvings, 2 pieces:

\$35, \$25, \$15

Weaponry, 2 pieces:

\$35, \$25, \$15

Maple Baskets (2):

\$35, \$25, \$15

White Oak Baskets (2):

\$35, \$25, \$15

Honeysuckle Vine Baskets (2):

\$35, \$25, \$15

Pony Beads, 2 items:

\$35, \$25, \$15

Seed Beads, 2 items:

\$35, \$25, \$15

Pottery, 2 items:

\$35, \$25, \$15

Old-Style Pottery, 2 items:

\$35, \$25, \$15

Finger Weaving, 2 items:

\$35, \$25, \$15

Drawing/Pastel:

\$35, \$25, \$15

Painting:

\$35, \$25, \$15

Youth Open Division:

All entries in the Open Division must contain 2 items. We will not accept anything for the Open Division that fits into one of the categories listed above.

Open Division:

\$35, \$25, \$15

MEMORY KEEPERS:

A 300- to 500-word history of anything pertaining to Cherokee history and culture. The written portion may be accompanied by 3 to 5 photographs, 8.5"x11" framed.

Memory Keepers:

\$35, \$25, \$15

BEST OF SHOW:

The winners for this category are chosen after judging is complete. Winners are chosen only from entries that have placed 1st in the categories listed above.

Best of Show Youth:

\$60, \$45, \$35

***All beadwork, paintings, and drawings must be mounted.**

***If your craft is fragile it is up to you, the artist, to submit it in a protective display case.**

***Neither the Co-op nor the Cherokee Fair staff will be responsible for any items that are broken or damaged during this event.**

***The arts and crafts entered must have been made since October 1, 2020.**





EBCI COOPERATIVE EXTENSION CENTER

876 Acquoni Road | PO Box 456 | Cherokee, NC 28719
facebook.com/ebcicooperativeextension | 828.359.6939

EXHIBIT & PRIZE LIST

Agriculture – digalogodi ugvwali **ᏁᏍᏁᏁ ᏅᏅᏅ**
 &
 Crafts – asinasahv **ᏃᏃᏃᏃ**



History of Cherokee Indian Fair and the EBCI Cooperative Extension Center

In the summer of 1912, Mr. Cato Sells, Commissioner of Indian Affairs made a special trip from Washington, D.C. to Cherokee. His objective in coming to Cherokee was to discuss with James E. Henderson, Superintendent and James Blythe, Farmer Agent, the possibility of promoting and sponsoring an Indian Fair. The Superintendent's desire was that the farmers of the six townships organize a club in each respective township; the clubs would form a Farmer's Organization. When the clubs were organized the membership totaled twenty-two members. The officers elected were as follows: Chairman, John W. Wolfe; Vice-Chairman, Johnson B. Thompson; English Clerk, Johnson Owle; Indian Clerk, Deliskie Climbingbear; Treasurer, Mary E. Wolfe. The Program Committee consisted of: Will West Long, Charlie Lambert and Arsene Thompson. During the year of 1914 the Commissioner of Indian Affairs officially authorized the presentation of the Fair. The Big Cove Farmer's Organization had a special meeting to elect a Fair Committee to work with the Superintendent and Farm Agent. The committee included: Will West Long, Charlie Lambert and Arsene Thompson. They were confronted with the problem of whether to hold the fair at Cherokee or Big Cove. When a vote was taken Cherokee was chosen, the count being 11 to 10. The next decision was what to name the fair. The two names put up for vote were "Indian Fair" presented by Will West Long and "Cherokee Indian Fair" by Mary E. Wolfe. The latter name was chosen and has never been changed. The first exhibit was held in what was then the school Chapel and is now known as Qualla Hall. Funding for the exhibit prizes was originally provided by the Cherokee Historical Association but today it is provided by the Eastern Band of Cherokee Indians through their Destination Marketing Department.

After World War II the NC Cooperative Extension Agency would send their first extension agent to the Qualla Boundary. Agents were instructed to assist the Cherokee with developing community clubs for the members of the Tribe. Much to their surprise they discovered that six townships had established Gadugi Groups and Farm Clubs. The Gadugi Organization was established long before the removal period and the Farm Clubs would be established in 1914 to assist in the development of the first Cherokee Indian Fair. Building off of these established groups the agents would assist the townships in developing today's Community Clubs and assist with the exhibits and booths of the fair. Mary Margret Smith would be the first agent to serve the Qualla Boundary in 1952. With her guidance the following clubs and programs would be formed in each Township: Agriculture, Community Development, Canning, Sewing, 4-H Clubs, Home Demonstration Clubs and involvement in the WNC Communities Honors Program.

Today, this long standing partnership continues with the EBCI Cooperative Extension Center and NC Cooperative Extension and each continue to serve a vital role in providing the following programs for members of the EBCI: Agriculture, 4-H, Family & Consumer Science, Tribal Cannery, RTCAR, Financial Education and Community Development. They also co-host with Qualla Arts & Crafts the Cherokee Indian Fair Exhibit awards and the Community Club Fair Booth Awards.

(Information taken from Cherokee Fair & Festival: A History thru 1978 by Mary Chiltoskey and other resources.)

EXHIBITOR GUIDELINES

All fair entries will be entered and picked up at the Cherokee Convention Center Exhibition Hall located at the Harrah's Cherokee Casino

1. Enter Items at the Cherokee Convention Center Exhibition Hall on Friday, September 30, 2022, from 8:00 am until 7:00 pm. The last entries will be taken at 7:00 pm and the Exhibition Hall doors will close at this time, and no one will be allowed to enter the building.
2. Judging for all entries (except for livestock) will be on Monday, October 3, 2022, from 8:00 am – noon.
3. Livestock Entry Forms will be taken at the Cherokee Convention Center Exhibition Hall on Friday, September 30 from 8:00 am – 7:00 pm. DO NOT bring livestock to the Convention Center on this date.
4. Livestock Judging will be on Saturday, October 8, 2022, at the EBCI/NC Cooperative Extension Center at 876 Acquoni Road. Entries must be at the Extension Center at 9:00 am. Judging will begin at 10:00 am – 12:00 noon.
5. Enter Baked Goods on Monday, October 3, 2022, at the EBCI Cooperative Extension Center Classroom at 876 Acquoni Road from 8:00 am – 11:30 am. No items will be accepted after 11:30 am.
6. Pick up Baked Goods and/or containers on Monday, October 3, 2022, from 5:00 – 6:00 pm at the EBCI Cooperative Extension Center Classroom.
7. Entry Pick-up will be on Sunday, October 9th from 1:00 pm – 4:00 pm, and Monday, October 10th from 8:00 am – 4:00 pm. Entries will be picked up in alphabetical order (A-F; G-K etc.) When you enter your item(s) you will be given information on when to pick up them up. Please bring your ticket(s) with you. Exhibit Hall doors will not be opened until 1:00 pm.
8. Unclaimed items can be picked up at the EBCI Cooperative Extension Center Classroom at 876 Acquoni Road Monday – Friday from 8:00 am – 4:00 pm. Unclaimed items will be considered abandoned and the property of the EBCI Cooperative Extension Center after Friday, November 4th, 2022.



EXHIBIT ENTRY REQUIREMENTS

The following information is required to enter an exhibit for an Adult, Young Adult or Youth:

- EBCI Enrollment Card
- Social Security Card
- Correct Mailing Address & Phone Number

1. Before entering any category, you must present your EBCI ENROLLMENT CARD at the REGISTRATION TABLE located in the Pre-Function Area of the Cherokee Convention Center Exhibition Hall (look for signs).
2. Please complete a W-9 Form at the REGISTRATION TABLE. W-9 forms are required by the EBCI Finance Division & EBCI Cooperative Extension Center.
 - Use your LEGAL NAME as it appears on your Social Security Card.
 - Use your LEGAL NAME when submitting your entry; use of a different name could delay your prize winnings.
 - When entering an item for a minor, use his or her LEGAL NAME and THEIR Social Security Number.
3. **All prize money will be mailed to the winners at the address listed on the W-9. Please make sure your address is correct. Winners will not receive their checks until the week after the fair.**
4. Due to 2020 & 2021 being pandemic years we will accept entries made from October 1, 2020 – September 30, 2022. Copyrighted items are not acceptable.
5. Items must fit into a category on the exhibit listings to be eligible for a prize. The “Other Category” is for any item that does not have a listed category.
6. Only one entry per person per category. With each entry, give your FULL LEGAL NAME and AGE. Age verification checks may take place at the discretion of the Extension Staff. It is our goal to have a fair and age appropriate competition.
7. EBCI Cooperative Extension Center reserves the right to reject any entry. Any entry that does not meet the guidelines for that particular category will not be accepted, judged, or displayed. Entries may be discarded when unsuitable for displaying. Copyright Items are not allowed.
8. Items are entered “at your own risk.” EBCI Cooperative Extension cannot guarantee the safety or condition of your exhibited items.
9. If there is only one item entered in a category the judges are not required to give a first place to that entry if they determine it is not first place quality.
10. Best of Show: Each Department/Division will award a “Best of Show” for their Division. Judges will make their selection from all the first-place winners from each category of the Department.
11. In the case of a misplaced ribbon, prize money will be awarded according to what is recorded in the entry book for each category.

For more information or if you have any questions, please contact the EBCI Cooperative Extension Center at 828-359-6939.

Department A Adult

Division 1 - Agriculture

Division 2 - Baked Goods

Division 3 - Canning & Food Preservation

Division 4 - Hobby

Division 5 - Photography

Division 6 - Sewing & Needlework

Division 1 - Agriculture



All agricultural items will be measured when entered. (Measurements: A peck is $\frac{1}{4}$ of a bushel.) Judging is based on a score sheet. Prizes given to top scores. Wild or cultivated, must include a card with an explanation of what it is and how it is used, and the Cherokee name. Entries will be discarded when unsuitable for displaying.

		1st	2nd	3rd
1. Any Traditional Cherokee Crop not listed as a category		\$50	\$40	\$30
2. Corn Beads	1/2 gallon, displayed in an Indian basket	\$50	\$40	\$30
3. Field Corn - 10 ears	a. Yellow	\$50	\$40	\$30
	b. White	\$50	\$40	\$30
4. Gourds (fresh, not decorated, with stem)	a. Ornamental-displayed in an Indian basket	\$50	\$40	\$30
	b. Birdhouse gourd	\$50	\$40	\$30
	c. Dipper gourd	\$50	\$40	\$30
	d. Any other gourd	\$50	\$40	\$30
	e. Largest gourd	\$50	\$40	\$30
5. Herb Display	5 different fresh or dried herbs, all labeled, with Cherokee name, and special use.	\$50	\$40	\$30
6. Honey Production - 3 quart jars	a. With comb	\$50	\$40	\$30
	b. Without comb	\$50	\$40	\$30

Division 1 - Agriculture

7. Indian Beans (one peck* shelled and dried, displayed in an Indian basket)	a. October beans	\$50	\$40	\$30
	b. Butter beans	\$50	\$40	\$30
	c. Both Butter beans and October beans	\$50	\$40	\$30
<hr/>				
8. Indian Corn Multicolored kernels	10 ears	\$50	\$40	\$30
<hr/>				
9. Indian Flour Corn 10 ears (no dent, 8-10 rows of kernels per ear)	a. White	\$50	\$40	\$30
	b. Yellow	\$50	\$40	\$30
	c. Other	\$50	\$40	\$30
<hr/>				
10. Irish Potatoes	one peck*	\$50	\$40	\$30
<hr/>				
11. Largest Sunflower	(diameter of head)	\$50	\$40	\$30
<hr/>				
12. Popcorn	5 ears, displayed in an Indian basket	\$50	\$40	\$30
<hr/>				
13. Pumpkin (leave 2" stem on)	a. Largest	\$50	\$40	\$30
	b. Ugliest	\$50	\$40	\$30
	c. Other pumpkin - (list the variety name)	\$50	\$40	\$30
<hr/>				
14. Unusual Vegetable	A vegetable that grew abnormally	\$50	\$40	\$30
<hr/>				
15. Winter Squash (leave 2" stem on)	a. Candy Roaster	\$50	\$40	\$30
	b. Largest Candy Roaster	\$50	\$40	\$30
	c. Any other Winter Squash	\$50	\$40	\$30
<hr/>				
16. Livestock	a. Poultry - Chickens, Turkeys, Ducks, Geese, Guinea Fowl	\$100	\$75	\$50
	b. Cows	\$100	\$75	\$50
	c. Horses	\$100	\$75	\$50
	d. Other Small Animals	\$100	\$75	\$50
	e. Other Large Animals	\$100	\$75	\$50
	f. Swine	\$100	\$75	\$50

Must register your livestock for competition on September 30, 2022

Division 1 - Agriculture

SPECIAL CONTESTS

One entry per household

17. Traditional Crops of the Cherokee	A display of 3-5 different traditionally cultivated crops. Include the Cherokee and English name for each crop and its significance.	\$100	\$75	\$50
18. Cherokee Family Garden Project	Submit: Mount on a 2'X3' stiff poster board, foam core, or similar: 1) Photos of your garden, 2) The quantity of vegetables produced, 3) Who worked in the garden, 4) Size of the garden, 5) One paragraph describing "How your garden reflects this year's fair theme."	\$100	\$75	\$50
19. **FLOWER ARRANGEMENTS** (All Age Divisions)	a. Garden	\$40	\$30	\$20
	b. Wild	\$40	\$30	\$20
	c. Dried	\$40	\$30	\$20

** Fresh Flower Arrangements will be entered on Friday, September 30, 2022, at the Cherokee Convention Center Exhibition Hall under the Agriculture Division. Must contain five (5) different flowers & card with names of each. Must be displayed in a decorative container. No glass jars or foil. **

Fresh/Dried Flowers & Herb Displays will be discarded if they are not suitable for display. The containers or vases will be displayed with entry tickets and ribbons.



Division 2 - Baked Goods



Recipes must accompany all entries. Have items ready for display in your own containers. Foil pans will not be accepted. Baked goods will be accepted Monday, October 3rd starting at 8:00 am until 11:30 am. No items will be accepted after 11:30 am. Exhibits and containers may be picked up Monday, October 3rd between 5:00 and 6:00 pm. Any items/containers not picked up by 6:00 pm will be disposed of immediately.

		1st	2nd	3rd
1. Breads	a. Traditional bean bread (3 pieces)	\$50	\$40	\$30
	b. Traditional chestnut bread (3 pieces)	\$50	\$40	\$30
	c. Traditional lye bread (3 pieces)	\$50	\$40	\$30
	d. Banana nut bread	\$40	\$30	\$20
2. Casseroles	Any casserole of your choice	\$40	\$30	\$20
3. Homemade Cakes	a. Pound cake	\$40	\$30	\$20
	b. Apple cake	\$40	\$30	\$20
	c. Other cake	\$40	\$30	\$20
4. Pies	a. Cream	\$40	\$30	\$20
	b. Fruit	\$40	\$30	\$20
	c. Other pies (including cobblers)	\$40	\$30	\$20
5. Diabetic Food	Any recipe of your choice	\$40	\$30	\$20
6. Other	Any baked item that does not fit in other categories	\$40	\$30	\$20

Division 3 – Canning & Food Preservation



All jars must be standard canning jars – no mayonnaise jars, jelly, or coffee jars. Label all jars with item, process time, and pressure. All jars must be sealed and have rings on them or they will be disqualified. Jars with a paraffin seal will not be accepted. Items processed at the Tribal Cannery are not eligible for competition.

	1st	2nd	3rd
1. 8 Jar Canning Collection: Must include 1 Fruit, 1 Vegetable, 1 Pickle or Relish, 1 Jam or Butter, and 1 Jelly. The other 3 jars are your choice – can be preserves, meats, or other foods.	\$50	\$40	\$30
2. Jam, Fruit Butters, Jelly, Preserves & Marmalades Collection: Collection must consist of four (4) different kinds.	\$40	\$30	\$20
3. Pickles & Relishes Collection: Collection must consist of four (4) different kinds.	\$40	\$30	\$20
4. Vegetable Collection: Must consist of four (4) different vegetables.	\$40	\$30	\$20
5. Traditional Foods Collection: Must consist of four (4) different foods, Wild Meats, Wild Greens, October Beans, etc. Each food item must be labeled.	\$50	\$40	\$30
6. Dried Foods Collection: Must consist of four (4) different foods displayed in a wooden bowl or basket. Each food item must be labeled.	\$40	\$30	\$20
7. Best Traditional Food: Must consist of 1 jar with description explaining what it is and how it is used.	\$50	\$40	\$30
8. Any Canned Food: Must consist of 1 jar with a description explaining what it is and how it is used.	\$40	\$30	\$20

Division 4 - Hobby



Items must have been made within October 1, 2020 – September 30, 2022.
 Copyrighted items are not allowed. Make each item ready for display, especially if the item requires hanging such as paintings and drawings. It is your responsibility to inform intake worker of media used.

		1st	2nd	3rd
1. Basketry	a. Basket	\$50	\$40	\$30
	b. Basket mat	\$50	\$40	\$30
2. Beading	a. 3 piece matching set	\$50	\$40	\$30
	b. Any item	\$50	\$40	\$30
3. Carving	a. Wood	\$50	\$40	\$30
	b. Stone	\$50	\$40	\$30
4. Ceramics/Pottery		\$50	\$40	\$30
5. Corn Shuck Art	a. Dolls	\$50	\$40	\$30
	b. Other	\$40	\$30	\$20
6. Decorated Dried Gourd		\$40	\$30	\$20
7. Other Hobby		\$40	\$30	\$20
8. Other Hobby Reflecting the Fair Theme		\$40	\$30	\$20
9. Graphic Design		\$40	\$30	\$20

Division 4 - Hobby

10. Drawing	a. Pencil/Charcoal/Pastel	\$40	\$30	\$20
	b. Pen/Ink	\$40	\$30	\$20
	c. Mixed or Other	\$40	\$30	\$20

11. Painting	a. Acrylic	\$40	\$30	\$20
	b. Watercolor	\$40	\$30	\$20
	c. Other	\$40	\$30	\$20

12. Poetry or Creative Writing	a. Framed or Matted	\$40	\$30	\$20
-----------------------------------	---------------------	------	------	------

CHEROKEE CULTURE HISTORICAL CATEGORIES

13. Replicated Historical Tools/Hunting	a. Knives, Axe heads, Bow Handle Drill, Spearhead/Arrowhead collection, Atl-Atl and Banner Stone	\$50	\$40	\$30
---	--	------	------	------

14. Traditional Jewelry	a. Shell Gorgets, Shell Jewelry, Copper	\$50	\$40	\$30
-------------------------	---	------	------	------



Division 5 – Photography



All photographs must be framed and ready to hang. Must include a description attached to the back indicating what it is, and what technique was used to achieve the results. Photographs that are damaged, have watermarks, or are unclear will not be judged or displayed. Copyright items will not be accepted. Photos must have been taken within October 1, 2020 – September 30, 2022.

The EBCI Cooperative Extension Photography category is for amateur photographers only. An Amateur photographer is any person involved in photography for pleasure only. This person does not derive income from his or her photography.

		1st	2nd	3rd
1. Nature	(Plants, Animals, natural on the Qualla Boundary)			
	a. Amateur	\$50	\$40	\$30
2. Cherokee Dances	a. Amateur	\$50	\$40	\$30
3 Cherokee Faces	a. Amateur	\$50	\$40	\$30
4. Other Photograph	Photo that does not fit into a listed category			
	a. Amateur	\$50	\$40	\$30
5. Reflecting Fair Theme	a. Amateur	\$50	\$40	\$30

Division 6 – Sewing & Needlework



Items must have been made within October 1, 2020 – September 30, 2022. Clothing must be a completed finished product and entered on a hanger for display. Soiled, stained or worn items will not be accepted, judged, or displayed. All needlework items will be tacked in order to display on wall. No quilt tops or unfinished items.

		1st	2nd	3rd
1. Historical Cherokee Clothing	a. 1800's era (complete outfits with accessories)	\$100	\$75	\$50
2. Traditional Cherokee Garment		\$50	\$40	\$30
3. Traditional Accessories (wearable or not)		\$50	\$40	\$30
4. Moccasins	a. Pucker Toe	\$50	\$40	\$30
	b. Beaded	\$50	\$40	\$30
5. Contemporary Clothing	a. Beginner Level	\$40	\$30	\$20
	b. Advanced Level	\$40	\$30	\$20
6. Sewn Dolls		\$40	\$30	\$20
7. Stuffed Toy (1)		\$40	\$30	\$20
8. Other Sewn Item		\$40	\$30	\$20
9. Sewn Item Reflecting the Fair Theme		\$40	\$30	\$20

Division 6 - Sewing & Needlework

10. Afghan	a. Crochet	\$50	\$40	\$30
	b. Knitted	\$50	\$40	\$30
11. Quilt	a. Pieced	\$75	\$60	\$45
	b. Appliquéd	\$75	\$60	\$45
	c. Baby (pieced or appliqué)	\$50	\$40	\$30
	d. Baby (tacked)	\$40	\$30	\$20
	e. Other (hand sewn)	\$75	\$60	\$45
12. Baby Afghan	a. Knit or Crochet	\$40	\$30	\$20
13. Baby Clothes	a. Knit or Crochet (3 Pieces)	\$50	\$40	\$30
14. Sweaters	a. Knit or Crochet	\$40	\$30	\$20
15. Scarf	a. Knit or Crochet	\$40	\$30	\$20
16. Knit - Other		\$40	\$30	\$20
17. Crochet - Other		\$40	\$30	\$20
18. Pillow Cases	(Any type work)	\$40	\$30	\$20
19. Cross Stitch	a. Counted	\$40	\$30	\$20
	b. Stamped	\$40	\$30	\$20
20. Needlepoint		\$40	\$30	\$20
21. Other Needlework		\$40	\$30	\$20
22. Fabric Design (swatch)	a. Matted or Framed	\$40	\$30	\$20



Department B Young Adult (Ages 13-17)

Division 1 - Agriculture

Division 2 - Baked Goods

Division 3 - Canning & Food Preservation

Division 4 - Hobby

Division 5 - Photography

Division 6 - Sewing & Needlework

Division 1 - Agriculture



All agricultural items will be measured when entered. (Measurements: A peck is $\frac{1}{4}$ of a bushel.) Judging is based on a score sheet. Prizes given to top scores. Wild or cultivated, must include a card with an explanation of what it is and how it is used, and the Cherokee name. Entries will be discarded when unsuitable for displaying.

		1st	2nd	3rd
1. Any Traditional Cherokee Crop not listed as a category		\$50	\$40	\$30
2. Corn Beads	1/2 gallon, displayed in an Indian basket	\$50	\$40	\$30
3. Field Corn - 10 ears	a. Field	\$35	\$25	\$20
	b. Flour	\$35	\$25	\$20
	c. Indian	\$35	\$25	\$20
4. Gourds (fresh, not decorated, with stem)	a. Birdhouse gourd	\$35	\$25	\$20
	b. Dipper gourd	\$35	\$25	\$20
	c. Largest gourd	\$35	\$25	\$20
5. Herb Display	5 different fresh or dried herbs, all labeled, with Cherokee name, and special use.	\$35	\$25	\$20
6. Honey Production - 3 quart jars	a. With comb	\$35	\$25	\$20
	b. Without comb	\$35	\$25	\$20
7. Indian Beans	one peck* shelled and dried, displayed in an Indian basket - October, Butter or mixed.	\$50	\$40	\$30

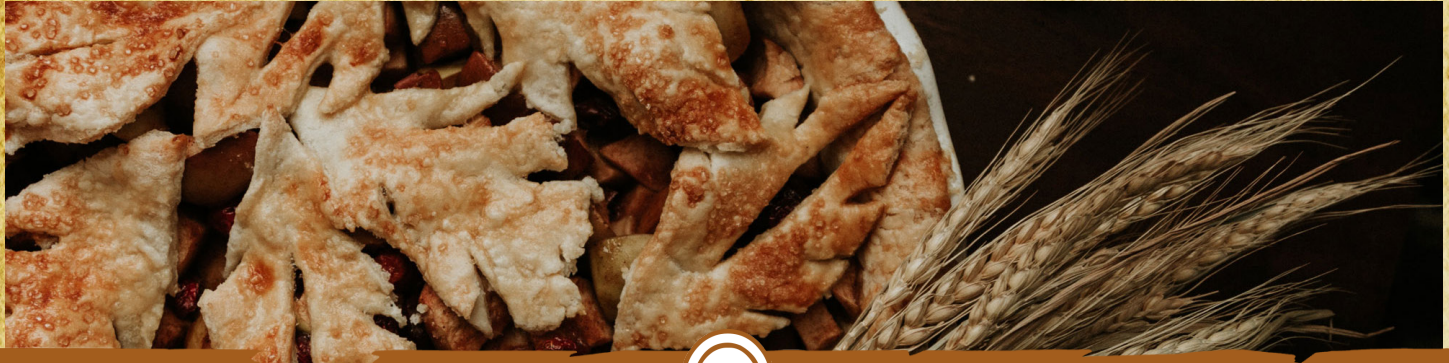
Division 1 - Agriculture

8. Irish Potatoes	Red or white; one peck	\$35	\$25	\$20
9. Largest Sunflower	(diameter of head)	\$35	\$25	\$20
10. Pumpkin (leave 2" stem on)	a. Largest	\$35	\$25	\$20
	b. Ugliest	\$35	\$25	\$20
11. Unusual Vegetable	A vegetable that grew abnormally	\$35	\$25	\$20
12. Winter Squash	List the variety	\$35	\$25	\$20
13. Livestock	a. Poultry - Chickens, Turkeys, Ducks, Geese, Guinea Fowl	\$100	\$75	\$50
	b. Cows	\$100	\$75	\$50
	c. Horses	\$100	\$75	\$50
	d. Other Small Animals	\$100	\$75	\$50
	e. Other Large Animals	\$100	\$75	\$50

Must register your livestock for competition on September 30, 2022



Division 2 - Baked Goods



Recipes must accompany all entries. Have items ready for display in your own containers. Foil pans will not be accepted. Baked goods will be accepted Monday, October 3rd starting at 8:00 am until 11:30 am. No items will be accepted after 11:30 am. Exhibits and containers may be picked up Monday, October 3rd between 5:00 and 6:00 pm. Any items/containers not picked up by 6:00 pm will be disposed of immediately.

		1st	2nd	3rd
1. Breads	a. Traditional bean bread (3 pieces)	\$50	\$40	\$30
	b. Traditional chestnut bread (3 pieces)	\$50	\$40	\$30
	c. Traditional lye bread (3 pieces)	\$50	\$40	\$30
2. Cookies	At least 6 cookies	\$25	\$20	\$15
3. Cupcakes	At least 4 cupcakes	\$25	\$20	\$15
4. Muffins	At least 4 muffins	\$25	\$20	\$15
5. Cake	Any	\$25	\$20	\$15
6. Diabetic	Any recipe of your choice	\$25	\$20	\$15
7. Other	Any baked item that does not fit other categories	\$25	\$20	\$15

Division 3 - Canning & Food Preservation



All jars must be standard canning jars – no mayonnaise jars, jelly, or coffee jars. Label all jars with item, process time, and pressure. All jars must be sealed and have rings on them or they will be disqualified. Jars with a paraffin seal will not be accepted. Items processed at the Tribal Cannery are not eligible for competition.

	1st	2nd	3rd
1. Any canned food	\$25	\$20	\$15
2. Any dried food	\$25	\$20	\$15



Division 4 - Hobby



Items must have been made within October 1, 2020 – September 30, 2022.
 Copyrighted items are not allowed. Make each item ready for display, especially if the item requires hanging such as paintings and drawings. It is your responsibility to inform intake worker of media used.

	1st	2nd	3rd
1. Basketry	\$50	\$40	\$30
2. Basket Mat	\$50	\$40	\$30
3. Beaded Jewelry	\$50	\$40	\$30
4. Other Beaded Item	\$50	\$40	\$30
5. Fingerweaving	\$50	\$40	\$30
6. Decorated Dried Gourd	\$50	\$40	\$30
7. Mask	\$50	\$40	\$30
8. Pottery	\$50	\$40	\$30
9. Cornhusk Doll	\$50	\$40	\$30
10. Soapstone Carving	\$50	\$40	\$30
11. Woodworking or Wood Carving	\$25	\$20	\$15

Division 4 - Hobby

12. Jewelry	\$25	\$20	\$15
13. Drawing (any media)	\$25	\$20	\$15
14. Painting (any media)	\$25	\$20	\$15
15. Essay – If you could own a business what would it be?	\$50	\$40	\$30
16. Essay – Culture Connection: History of Community Free Labor Groups	\$50	\$40	\$30
17. Poetry or Creative Writing - Framed or Matted	\$25	\$20	\$15
18. Lego Model	\$25	\$20	\$15
19. Electric Project	\$25	\$20	\$15
20. Other Hobby	\$25	\$20	\$15
21. Other Hobby Reflecting the Fair Theme	\$25	\$20	\$15



Division 5 – Photography



All photographs must be framed and ready to hang. Must include a description attached to the back indicating what it is, and what technique was used to achieve the results. Photographs that are damaged, have watermarks, or are unclear will not be judged or displayed. Copyright items will not be accepted. Photos must have been taken within
October 1, 2020 – September 30, 2022

		1st	2nd	3rd
1. Cherokee Nature	(Plants, Animals, natural on the Qualla Boundary)	\$25	\$20	\$15
2. Cherokee Dances		\$25	\$20	\$15
3 Cherokee Faces		\$25	\$20	\$15
4. Selfie	A photograph that one has taken of oneself	\$25	\$20	\$15



Division 6 - Sewing & Needlework



Items must have been made within October 1, 2020 – September 30, 2022. Clothing must be a completed finished product and entered on a hanger for display. Soiled, stained or worn items will not be accepted, judged, or displayed. All needlework items will tacked in order to display on wall. No quilt tops or unfinished items.

	1st	2nd	3rd
1. Traditional Cherokee Garment	\$50	\$40	\$30
2. Accessory - wearable or not	\$30	\$20	\$15
3. Fabric Design (swatch) - Framed or Matted	\$30	\$20	\$15
4. Any Other Sewn Item	\$30	\$20	\$15
5. Any Crochet or Knitted Item	\$30	\$20	\$15
6. Any Embroidery Item	\$30	\$20	\$15





Department C Youth (Ages 6-12)

Division 1 - Agriculture

Division 2 - Baked Goods

Division 3 - Canning & Food Preservation

Division 4 - Hobby

Division 5 - Photography

Division 6 - Sewing & Needlework

Division 1 - Agriculture



All agricultural items will be measured when entered. (Measurements: A peck is $\frac{1}{4}$ of a bushel.) Judging is based on a score sheet. Prizes given to top scores. Wild or cultivated, must include a card with an explanation of what it is and how it is used, and the Cherokee name. Entries will be discarded when unsuitable for displaying.

		1st	2nd	3rd
1. Any Traditional Cherokee Crop not listed as a category		\$50	\$40	\$30
2. Corn Beads	1/2 gallon, displayed in an Indian basket	\$50	\$40	\$30
3. Corn - 10 ears	a. Field	\$35	\$25	\$20
	b. Flour	\$35	\$25	\$20
	c. Indian	\$35	\$25	\$20
4. Gourds (fresh, not decorated, with stem)	b. Birdhouse gourd	\$25	\$20	\$15
	c. Dipper gourd	\$25	\$20	\$15
	d. Largest gourd	\$25	\$20	\$15
5. Herb Display	5 different fresh or dried herbs, all labeled, with Cherokee name, and special use.	\$25	\$20	\$15
6. Honey Production - 3 quart jars	a. With comb	\$25	\$20	\$15
	b. Without comb	\$25	\$20	\$15
7. Indian Beans	One peck - shelled, & dried, displayed in an Indian basket - October, Butter, or Mixed	\$50	\$40	\$30

Division 1 - Agriculture

8. Irish Potatoes	Red or White - one peck	\$25	\$20	\$15
9. Largest Sunflower	(diameter of head)	\$25	\$20	\$15
10. Pumpkin (leave 2" stem on)	a. Largest	\$25	\$20	\$15
	b. Ugliest	\$25	\$20	\$15
	c. Painted	\$25	\$20	\$15
	d. Other pumpkin - (list the variety name)	\$25	\$20	\$15
11. Unusual Vegetable	A vegetable that grew abnormally	\$25	\$20	\$15
12. Winter Squash	List the variety	\$25	\$20	\$15
13. Livestock	a. Poultry - Chickens, Turkeys, Ducks, Geese, Guinea Fowl	\$100	\$75	\$50
	b. Cows	\$100	\$75	\$50
	c. Horses	\$100	\$75	\$50
	d. Other Small Animals	\$100	\$75	\$50
	e. Other Large Animals	\$100	\$75	\$50

Must register your livestock for competition on September 30, 2022



Division 2 - Baked Goods



Recipes must accompany all entries. Have items ready for display in your own containers. Foil pans will not be accepted. Baked goods will be accepted Monday, October 3rd starting at 8:00 am until 11:30 am. No items will be accepted after 11:30 am. Exhibits and containers may be picked up Monday, October 3rd between 5:00 and 6:00 pm. Any items/containers not picked up by 6:00 pm will be disposed of immediately.

		1st	2nd	3rd
1. Breads	a. Traditional bean bread (3 pieces)	\$50	\$40	\$30
	b. Traditional chestnut bread (3 pieces)	\$50	\$40	\$30
	c. Traditional lye bread (3 pieces)	\$50	\$40	\$30
2. Cookies	At least 6 cookies	\$20	\$15	\$10
3. Cupcakes	At least 4 cupcakes	\$20	\$15	\$10
4. Muffins	At least 4 muffins	\$20	\$15	\$10
5. Cake	Any	\$20	\$15	\$10
6. Diabetic Food	Any recipe of your choice	\$20	\$15	\$10
7. Other	Any baked item that does not fit in other categories	\$20	\$15	\$10

Division 3 – Canning & Food Preservation



All jars must be standard canning jars – no mayonnaise jars, jelly, or coffee jars. Label all jars with item, process time, and pressure. All jars must be sealed and have rings on them or they will be disqualified. Jars with a paraffin seal will not be accepted. Items processed at the Tribal Cannery are not eligible for competition.

	1st	2nd	3rd
1. Any canned food	\$20	\$15	\$10
2. Any dried food	\$20	\$15	\$10



Division 4 - Hobby



Items must have been made within October 1, 2020 – September 30, 2022.
Copyrighted items are not allowed. Make each item ready for display, especially if the item requires hanging such as paintings and drawings. It is your responsibility to inform intake worker of media used.

	1st	2nd	3rd
1. Basketry	\$50	\$40	\$30
2. Basket Mat	\$50	\$40	\$30
3. Beaded - Jewelry	\$50	\$40	\$30
4. Other Beaded Item	\$50	\$40	\$30
5. Fingerweaving	\$50	\$40	\$30
6. Decorated Dried Gourd	\$50	\$40	\$30
7. Mask	\$50	\$40	\$30
8. Pottery	\$50	\$40	\$30
9. Cornhusk Doll	\$50	\$40	\$30
10. Soapstone Carving	\$50	\$40	\$30

Division 4 - Hobby

11. Woodworking	Or Wood Carving	\$25	\$20	\$15
12. Jewelry		\$25	\$20	\$15
13. Drawing	Any media	\$25	\$20	\$15
14. Painting	Any media	\$25	\$20	\$15
15. Essay	a. If you could own a business what would it be?	\$50	\$40	\$30
	b. Culture Connection: History of Community Free Labor Groups	\$50	\$40	\$30
16. Poetry or Creative Writing	Framed or Matted	\$50	\$40	\$30
17. Lego Model		\$25	\$20	\$15
18. Electric Project		\$25	\$20	\$15
19. Other Hobby		\$25	\$20	\$15
20. Other Hobby	Reflecting the Fair Theme	\$25	\$20	\$15



Division 5 – Photography



All photographs must be framed and ready to hang. Must include a description attached to the back indicating what it is, and what technique was used to achieve the results. Photographs that are damaged, have watermarks, or are unclear will not be judged or displayed. Copyright items will not be accepted. Photos must have been taken within
October 1, 2020 – September 30, 2022

		1st	2nd	3rd
1. Cherokee Nature	(Plants, Animals, natural on the Qualla Boundary)	\$25	\$20	\$15
2. Cherokee Dances		\$25	\$20	\$15
3. Cherokee Faces		\$25	\$20	\$15
4. Selfie	A photograph that one has taken of oneself	\$25	\$20	\$15



Division 6 – Sewing & Needlework



Items must have been made within October 1, 2020 – September 30, 2022. Clothing must be a completed finished product and entered on a hanger for display. Soiled, stained or worn items will not be accepted, judged, or displayed. All needlework items will tacked in order to display on wall. No quilt tops or unfinished items.

	1st	2nd	3rd
1. Traditional Cherokee Garment	\$50	\$40	\$30
2. Accessories - Wearable or Not	\$25	\$20	\$15
3. Fabric Design (Swatch) - Framed or Matted	\$25	\$20	\$15
4. Any Other Sewn Item	\$25	\$20	\$15
5. Any Crochet or Knitted Item	\$25	\$20	\$15
6. Any Embroidery Item	\$25	\$20	\$15





Special Departments

Division 7 - Department D -
Cloverbuds Youth (Ages 2-5)

Division 8 - Department E -
Special Exhibits Special Needs Program
Any category

Division 9 - Department F -
Senior Elder Anyone over the age of 75
(Any category)



VisitCherokeeNC.com

EBCI.com



Qualla Arts
AND CRAFTS MUTUAL, INC.

Ea ELEMENT
ADVERTISING