

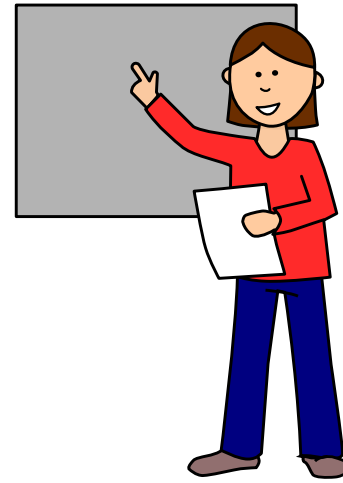
SWAIN COUNTY SCHOOLS



PLAN FOR REOPENING



PARENTS MAY CHOOSE PLAN-B



2 days per week of teacher/student interaction and instruction in a classroom



3 days per week of remote instruction that is directly tied to in class instruction, subject matter and classroom teacher

Students who opt for Plan B will be split into 2 groups
an A Group
and B Group

The Following Considerations Will Be Used in Determining Groups

- Siblings will be placed in the same group
- Bus routing and loads will be balanced to stay within guidelines
- Balancing of Teacher loads

A large, stylized white letter 'B' is centered within a dark red circle. The circle has a decorative border of short, radiating white lines. The entire graphic is set against a dark red, triangular background that points towards the top right of the slide.

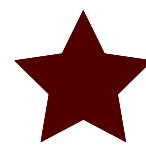
PLAN-B SCHEDULE FOR 1ST 3 WEEKS



Normal A/B Schedule

AUGUST				
Monday 17 ★ A ₁	Tuesday 18 A ₂	Wednesday 19 RLD	Thursday 20 B ₁	Friday 21 B ₂
Monday 24 A	Tuesday 25 A	Wednesday 26 RLD	Thursday 27 B	Friday 28 B
Monday 31 A	Tuesday 1 A	Wednesday 2 RLD	Thursday 3 B	Friday 4 B
SEPTEMBER				

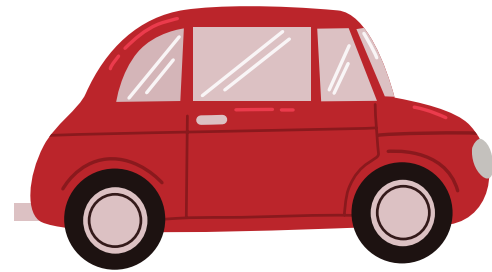
RLD Remote Learning Day for Everyone



For 1st Week of
School ONLY

Group A will be split into A₁ & A₂
Group B will be split into B₁ & B₂

PLAN-B START OF EVERY DAY



Parent Drop-off - Students will be screened in the vehicle, parent will have to answer 3 screening questions - student will have temperature taken - This will occur everyday

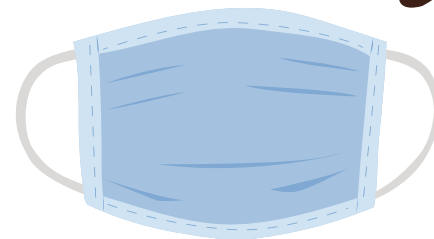
Bus Riders - Students will be screened as they get off the bus, will have to answer 3 screening questions - student will have temperature taken - This will occur everyday, unless the parent is willing to sign an attestation form that will cover the whole semester.



Students who have a higher than **100.4** temperature at parent drop-off will not be allowed to come into school - Bus students will be placed in a safe room, where possible by themselves (with adult supervision) or separated by 6' from others with fever, while parents are called.



Students who do NOT have a fever will proceed directly to their classroom.



Everyone in the school building, staff and students, will be required to wear a face covering. Students will be given breaks, where they can remove their mask for brief periods of time. Students, wherever possible, will remain 6 feet apart.

A large, stylized white letter 'B' centered within a dark red diamond shape that has a sunburst or radiating line pattern around the letter.

PLAN-B ANSWERS TO FAQ

- Yes, students and staff are required to wear face masks while at school.
- Students who are in Plan B, may switch to Plan C prior to the end of the semester, simply contact the school at which the child is enrolled.
- Students may NOT switch from Plan C to Plan B until the end of the semester. Reason for this is the teacher classroom loads are already set, bus loads are already set, 6 foot spacing at the school has already been determined.
- Due to bus seating restrictions (1 student per seat), we will not be able to allow students to ride home with other students, or to jump from bus to bus. SO please work out any ride issues that you might have prior to the start of the school year and stick to them until the state of emergency is lifted.
- Remote Learning will look drastically different than last spring.
- Until the state of emergency is lifted or we move to Plan A, there will be no visitors allowed on any of our campuses. Any parent visits must be done by appointment.
- Our cafeteria staff at each school will be serving breakfast and lunch. Food will be brought to the classroom (or other similar social distancing practices) for the students.
- High traffic areas in each school will be wiped down throughout the day.
- Please help by checking your child's temperature, keep them home from school if they are running a fever or are otherwise sick.

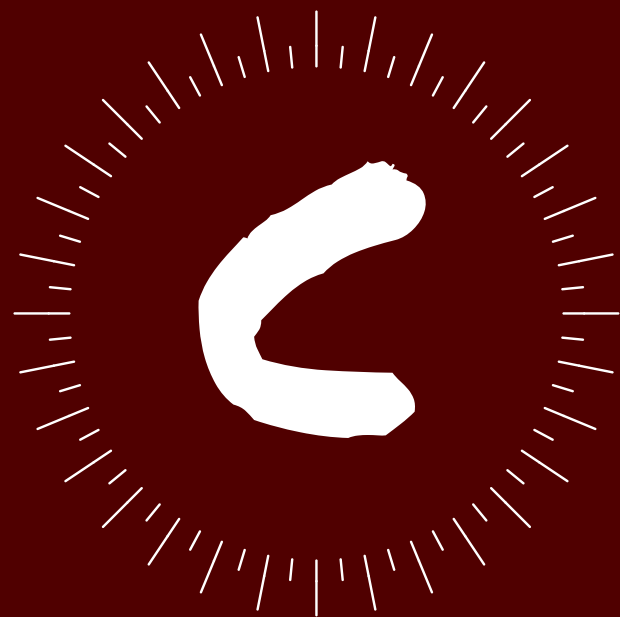


B

PARENTS MAY CHOOSE PLAN-C



5 days per week of remote instruction that is directly tied to a Swain County Schools Employee who has direct access to subject matter teacher.



Swain County School's Plan C students will have someone from their school who will contact them on a regular basis (number of times may vary by school), as well as ask questions that will be answered by a subject area teacher.



Swain County Schools has partnered with Edmentum to provide our Remote Learning Platform. Kindergarten through 12th grade will be covered by rich content that aligns with NC Course of Study.



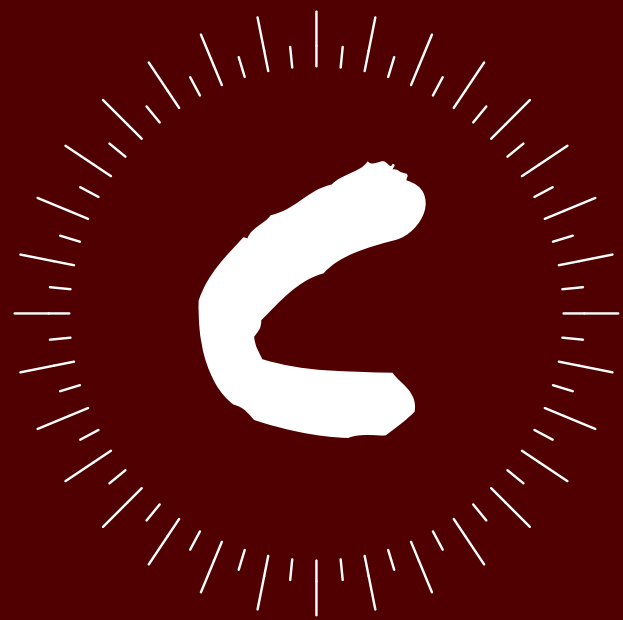
Swain County Schools is acutely aware of connectivity issues in Swain County and has worked hard with community partners to reach as many of our areas as is possible. If you have issues we will work with you to establish a way for your child to accomplish remote learning.



Swain County Schools Remote Learning Plan will be rigorous and content specific. Students will be expected to complete assignments, staying on the timeline of the Edmentum coursework

PLAN-C ANSWERS TO FAQ

- Students who are in Plan B may switch to Plan C prior to the end of the semester, simply contact the school at which the child is enrolled.
- Students may NOT switch from Plan C to Plan B until the end of the semester. Reason for this is the teacher classroom loads are already set, bus loads are already set, 6 foot spacing at the school has already been determined.
- Remote Learning will look drastically different than last spring.
- Swain County School's Plan C students and/or parents may contact their school at anytime with questions or for help.
- Each school will have employees who regularly touch base with Plan C students how often that is will depend on the school itself.
- Swain County Schools is in the process of developing community places where solid wifi connections will be, and do our best to staff these so that Plan C students can come in for help or wifi connectivity. Those will be announced at a later date.
- Until the state of emergency is lifted or we move to Plan A, there will be no visitors allowed on any of our campuses. Any parent visits must be done by appointment.



IMPORTANT INFORMATION

- Please note that there are segments of our plan that are not in our control. For instance, Governor Cooper may change our school status at any point, which will mean that we as a system will have to react to that decision. We are confident in our plans, and feel that we have the best Plan B and C possible for our students, parents and community as a whole.
- A little over 70% of our parents wanted face-to-face instruction for their children, leaving right at 30% who preferred to keep their child at home. Our Plan embraces both of those sets of parents and gives, what we feel is the best of both worlds for our students.
- Swain County Schools have protocols in place, as dictated by the NC Department of Health and Human Services, as to what we do in the instance of a positive case at our schools. We will also contact and follow the guidance from Alison Cochran of the Swain County Health Department. Copies of these protocols are at each school and available upon request.
- We will not allow transfers from other districts at this time.
- Anyone who moves into Swain County and enrolls in Swain County Schools will be accepted as a student under Plan C.

